

New Developments in Science for Practicing Clinicians



Chairs

Professors Mauro Perretti and Magdi Yaqoob

William Harvey Research Institute,
London, UK

**Allocated 6 CPD credits by the
Royal College of Physicians**

8 October 2010

Derek Willoughby Lecture Theatre,
John Vane Science Centre
Charterhouse Square, London,
EC1M 6BQ, UK

Register at [www.williamharvey.co.uk/
conferences/2010.htm](http://www.williamharvey.co.uk/conferences/2010.htm)

8 October 2010

09:00 Registration, Tea and Coffee

09:25 Welcome
Professor Magdi Yaqoob,
William Harvey Research Institute

09:30 Microarray: Opportunities
from Gene to Clinical Use
Professor Bryan Young,
Barts and The London SMD

10:00 Knock-out and Knock-in:
Validation Process for Disease-
Related Genes
Dr Fulvio D'Acquisto,
Barts and The London SMD

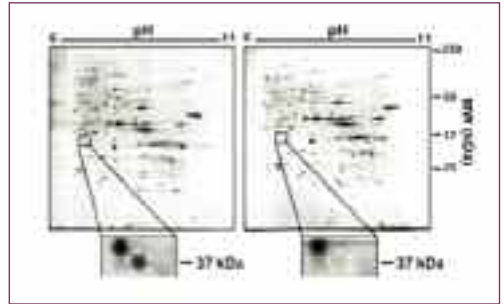
10:30 Refreshments

11:15 Proteomics: Unveiling New Clues
for Cardiovascular Pathologies
Dr Manuel Mayr,
Kings College London

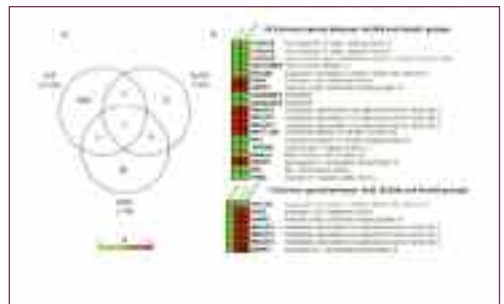
11:45 Biomarkers: Fundamental Aspects
for Novel Drug Discovery
Dr Vincenzo Libri,
Imperial College

12:15 Flow Cytometry: A New
Opportunity from Bench
to Bedside
Professor Marion Macey,
Barts and The London SMD

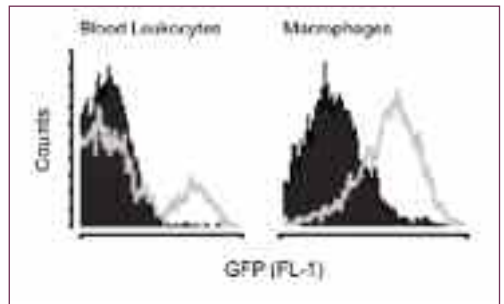
12:45 Lunch



Proteomics



MicroArray



Flow Cytometry

13:55 Introductory Words to
the Afternoon Session
Professor Mauro Perretti,
William Harvey Research Institute

14:00 Platelets and Thombosis Testing
Professor Tim Warner,
Barts and The London SMD

14:30 Stem Cell Therapy and Myocardial
Repair
Professor Ken Suzuki,
Barts and The London SMD

15:00 Genetics and Single Nucleotide
Polymorphisms in Common
Disease
Professor Mark Caulfield,
Barts and The London SMD

15:30 Refreshments

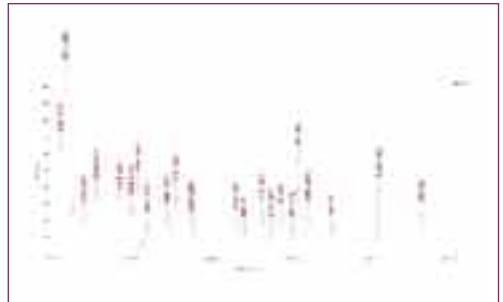
16:15 Endothelial Function as a Marker
of Cardiovascular Health
Professor Amrita Ahluwalia,
Barts and The London SMD

16:45 **Special Lecture:**
Aspirin, COX-2 and Beyond!
Professor Rod Flower FRS,
Barts and The London SMD

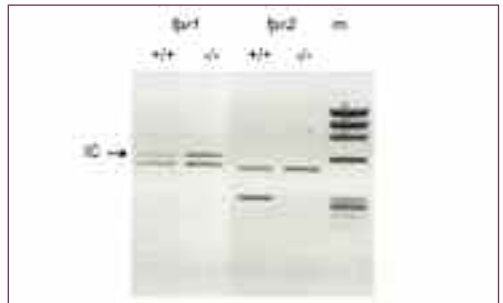
17:45 Adjournment



Gene Constructs



Mass Spectrometry



PCR

www.williamharvey.co.uk

William Harvey Research Limited
John Vane Science Centre
Charterhouse Square
London
EC1M 6BQ
United Kingdom
Tel: +44 (0)20 7882 8808
Fax: +44 (0)20 7882 6016
email: whrl@qmul.ac.uk

Registered in England – Registration No 2437946
Registered office: Charterhouse Square, London, EC1M 6BQ

WILLIAM HARVEY CONFERENCES